

2nd Rallye East Yorkshire

Historic & Targa



Saturday 4th June &
Sunday 5th June 2022



Final

Instructions

 **MAPLE**

LOCAL NEW & USED CAR SPECIALISTS



As a recently formed club we appreciate having received your entry for the 2nd running of our Historic & Targa Road Rally which this year moves to a 2 day programme with an over night halt.

We would like to emphasize that these instructions form an integral part of the written instructions to competitors. As such they should be treated as part of the regulations of the event as should Notices and Amendments posted on the Official Notice Board to be found at Rally HQ.

Having completed the seeding of competitors you will find your START number on the published seeded entry list and your due time at MTC 1 will be 13.00 PLUS your start number in minutes.

The Rally will start on Saturday 4th June from the Stables Paddock of Sledmere House. Entrance to the Paddock is from the Kirby Grindalythe road [Grid ref: Map 101 - 927/648] or ([haircuts.visual.valuables](https://www.haircuts.visual.valuables.com) using what3words).

The rally HQ will be at the Eastern end of the Paddock [930/648].

Noise and Scrutineering checks will take place in the Barn Yard and is accessed from the eastern end of the paddock next to Rally HQ (see attached map)

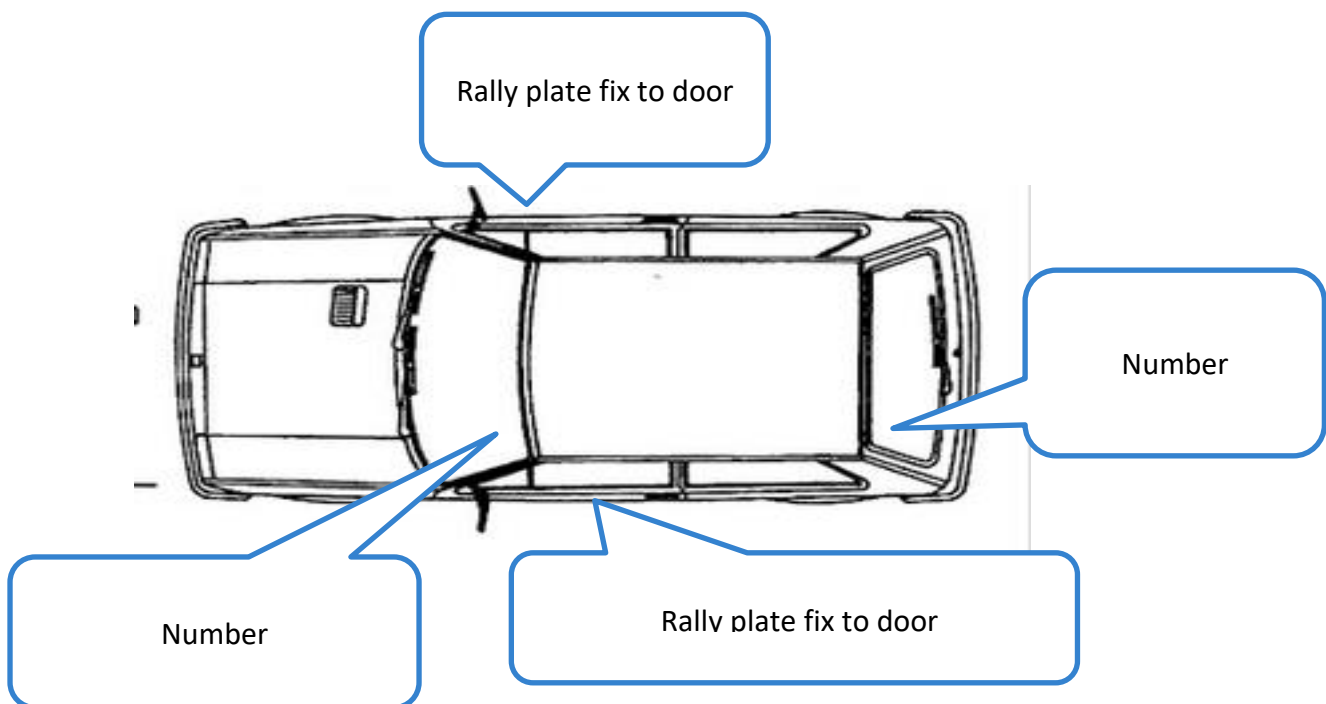
Full Scrutineering checks of every car will take place before documentation as well as random checks throughout the event at the discretion of the Chief Scrutineer. Anyone not complying to a request from any Scrutineer may be subject to Exclusion at the discretion of the Clerk of the Course.

Included in your rally pack will be meal vouchers for the tea halt on Saturday, the Platinum Pig Roast on Saturday evening at halfway, Bacon/Sausage Rolls and Tea/Coffee Sunday morning and a cold summer buffet at the finish. Upon arrival you will be able to purchase refreshments from the cabin near to Rally HQ during Saturday morning/lunchtime or just bring your own packed lunch.

Additions to Supplementary Regulations.

1. Competitors are reminded that they must carry a small spill kit, First Aid Kit, Warning Triangle and OK/SOS Board. You MUST present a valid MOT certificate or V112 declaration at Scrutineering irrespective of the vehicle age.
2. Competitors are also reminded that all injuries and incidents must be reported to the Police authority as detailed in section 170 Road Traffic Act 1988 and Rule 286 Highway Code.
3. Rally HQ, Scrutineering, Noise, Trailer Parking, Camping area, competitors parking and breakfast cabin are all marked on the enclosed map.
4. Scrutineering: cars will be checked for both safety and eligibility. In addition Historic Class cars will be checked against Waiver requests.
5. Remember every car must be fitted with its full manufacturers TRIM [R18.1.4] vehicles not adhering to this regulation may be issued with a non-compliance and be subject to penalties or exclusion at the discretion of the Clerk of the Course.
6. Results will be published as soon as humanly possible after every car has finished. Provisional results will be published as soon as results has all of the marshals check sheets in and all stop astride and code boards have been checked. If you have a query, results will be able to handle it. All Marshals are judges of fact and their judgement is final. Discussions will not be entered into for judges of fact scenarios. Queries with results will be used whereby a time may have been keyed or reported incorrectly. Results will be published at www.rallyscore.net click on the event. Results will be on site and not working remotely so queries will be able to be handled in person. The organisers aim to have the results provisional and final the same day as the end of the rally.

7. Competition Licences and Club Membership Cars must be brought to documentation for inspection before collection of your rally packs. All competitors must be signed on before they arrive at the rally and there will be no facility to sign on if you do not complete the competitors signing on available at www.rallyscore.net before the event. You have been warned.
8. Amendments- any amendments will be on display at Rally HQ and must be signed for before leaving MTC1.
9. Speeding on the public roads or driving in any sort of erratic manner will not be tolerated. Any reports of speeding or erratic driving on public roads may result in your exclusion from the rally. You have been warned.



Your Event Schedule will be:

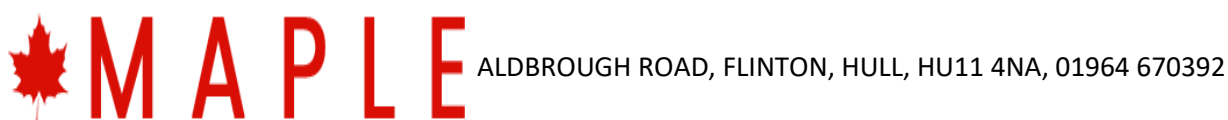
Ref:	Action	Time
1	Saturday 4 th Venue Opens	From 08.30am
2	Scrutineering and Noise	09.00am to 12.00pm
3	Documentation Rally HQ	09.00am to 12.00pm
4	Competitors Briefing at Rally HQ	12.30pm to 12.50pm
5	Car 1 leaves MTC1	13.01pm
6	1 st Car returns to Rally HQ (MTC3)	From 18.30pm
7	Sunday 5 th June Competitors Get Ready	From 08.00am
8	Car 1 leaves MTC 4	09.01am
9	1 st Car due back at Rally HQ Sunday (MTC 5)	13.00pm
10	Finish Buffet, Results and Awards	2.30pm to 4pm
11	Rally Ends Competitors leave, Safe Journey Home	4pm onwards

List of Officials:

Club Stewards	Alan Hill, Derek Lee Graham Wride
Clerk of the Course	Stuart Taylor
Competitor Liaison Officer	Andy Beaumont
Secretary of the Meeting	Craig Winter
Entries Membership Secretary	James Greenhough
Safeguarding Officer	Stuart Taylor
Results	www.rallyscore.net
MSUK Chief Scrutineer	Ian Barber
MSUK Scrutineer	Mark Sherburn
Noise	P Rowntree/K Sherburn
Chief Marshals	James Greenhough/ Neil Paylor

A very big thank you to our Sponsors

As a recently formed club in 2020 we are exceedingly grateful to each and every one of our sponsors.



LOCAL NEW & USED CAR SPECIALISTS



MATHEWSONS CLASSIC CARS of THORTON DALE, PICKERING

In addition we would like to acknowledge the generous support of ;



SLEDMERE ESTATES



BIGBOOLIES

The rally committee and organisers of the Rallye East Yorkshire are all members of Yorkshire Wolds Motor Club. We are only a small team and those people are;

Stuart Taylor (Chairman)

Andy Beaumont

Dave Short

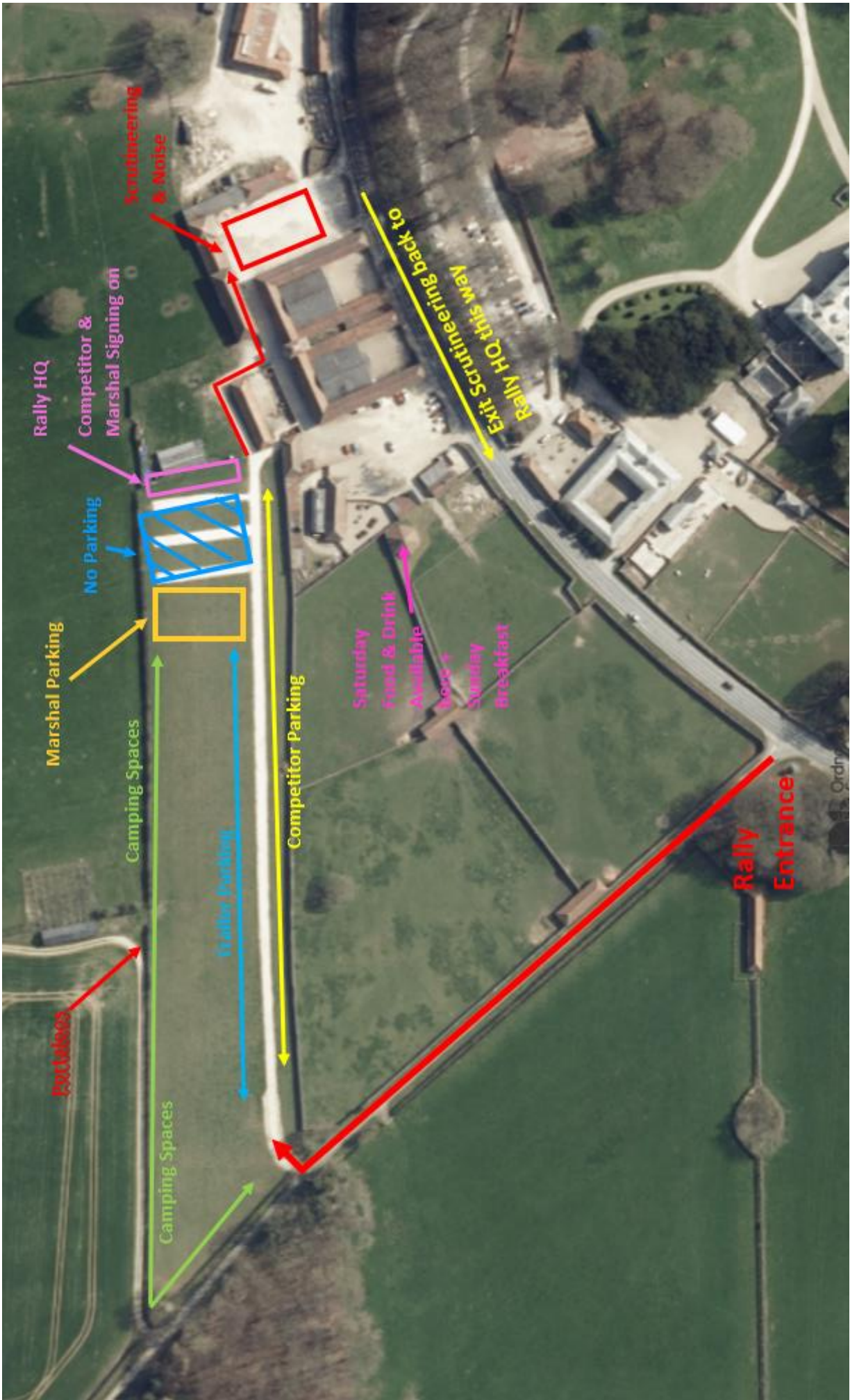
Roy Heath

Martin Bayes (Treasurer)

Neil Paylor

James Greenhough (Vice Chairman)

Our recently joined club secretary is Craig Winter.



ADVANCE COMPETITORS BRIEFING NOTES

STOP ASTRIDE PROCEDURES

Manned Stop Astride- at the stop astride marked on your test diagram bring your car to a rest with the front wheels forward of the markers and the rear wheels behind the markers. The Marshal will be holding up a STOP sign telling you to stop. Once you have come to a rest and only when you have come to a rest the Marshal will show you a code to write down on your timecard. Once you have written down the code you may carry on to complete the test, no signal will be made by the marshal. If you fail to stop at the stop astride DO NOT attempt to reverse, carry on and complete the test as you have already got the penalty. Please ensure that you write down the code clearly in ink and with all letters and numbers correct as any codes that cannot be read or that are incorrect will not count. The Marshal at the test finish control will strike through any boxes on your timecard that are not completed.

Unmanned Stop Astride - at the stop astride marked on your test diagram bring your car to a rest with the front wheels forward of the markers and the rear wheels behind the markers. Adjacent to the Navigators window will be a code mounted on a stake for you to write down. Once you have written down the code you may carry on to complete the test. If you fail to stop at the stop astride DO NOT attempt to reverse, carry on and complete the test. Any observed attempts to reverse back to stop astrides will be penalised. Please ensure that you write down the code clearly in ink and with all letters and numbers correct as any codes that cannot be read or that are incorrect will not count. The Marshal at the test finish control will strike through any boxes on your timecard that are not completed.

Stop Astride Finish – As soon as you have stopped move forward to the test finish marshal do not sit there as another car may want the stop astride seconds after you have stopped.

TEST ETIQUETTE

It is only Gentlemanly to let another competitor past if you are baulking them in test. Please move over to let them by as soon as safe to do so.

PETROL

There is no petrol available in Sledmere village. The nearest petrol station is located at Fridaythorpe Filling Station YO25 9SD opens 8am- 7pm Sundays. We suggest you fill up prior to arriving at the event.

Petrol on rally route Saturday

after 52 miles and 6 tests – West Heslerton Petrol Station YO178SG ¼ mile detour off rally route

after 89 miles and 10 tests- Ayton Shell Petrol 2miles from Tea Halt YO139HL

after 99 miles and 12 tests- Ayton Shell Petrol on route closes 10pm YO139HL

after 104 miles and 12 tests Staxton Shell Petrol 200 metres detour off rally route open 24hrs YO124SB

Petrol on rally route Sunday

After 45 miles and 5 tests – Staxton Shell Garage 200 metres detour off rally route open 24hrs YO124SB

After 50 miles and 5 tests – Ayton Shell Garage on rally route no detour YO139HL

After 60 miles and 6 tests – West Heslerton Garage YO178SG detour 4 miles off rally route

After 80 miles and 7 tests – Fridaythorpe Filling Station 1.5 miles off rally route

Instructions on petrol locations ARE NOT contained in the tulip road book as they off route so please familiarize yourself with where they are before starting the rally.

TIMECARDS

Each timecard has spaces for you to write in codes taken from both Code boards and Stop Astrides. To make it easier to follow we have put a watermark in each box with either “Code Board” or “Stop Astride” showing. Use this both to write your number or number and letter code in writing over the watermark in pen. Timecards also have spaces to write passage checks in that you may come across on the road sections. Each timecard has a time schedule for you to follow based on a notional car 0 time. You will need to add your car number to the notional car 0 time for your actual due time.

You must make available your timecard to any Marshal asking to view it and sign it. Timecards collection points are indicated on each timecard.

ROAD SECTIONS

On Saturday and Sunday there are two fairly lengthy road sections using a tulip road book. This is not to waste your time or fuel but to gain us sufficient time to move marshals from test to test.

The tulip road book uses distances to each junction (Tulip) so you will need some way of doing this. Not every junction is listed in the roadbook only the significant ones so keeping a note of the distance you have travelled between junctions is quite important. Mobile phones are not excluded from use on this event so a simple and cost-effective way to measure distances is using your mobile phone mounted to dash mount and using one of the rally trip apps available free of charge. There is no need to have a Brantz or other type of trip although if you have one already fitted you are sorted. All of the road sections are based on an average of 30mph so there is no need to rush or speed. We do not want to exclude anyone for speeding so please act in a respectful manner to all road users. Save your speed for the tests.

The road sections are not timed either other than adding to your overall lateness so again no need for speeding or rushing on road sections.

MTCs

You must visit all Main Time Controls and we ask that you make up all lateness at MTC2 on Saturday to keep all cars to the time schedule. MTC2 is at Tea Halt Out.

Rally Time

Will be on display at documentation and MTC1 so that you can zero your clocks to rally time.

If you get lost on the road

If you get lost on the road, don't panic and keep driving. The best option is to stop and wait for the car following you to come along and then follow them to the next test. It may cost you a minute or two but at least you get back on route.

Coffee/Tea Halt

We have a nice setting for your break on Saturday with coffee tea and biscuits laid on. If you wish to purchase some food or alternative drink I am sure the café will appreciate your custom who have very kindly stopped open for us past their normal closing time.

Catering Locations

The platinum pig roast will be laid on by Sledmere House Catering and will be located at the eastern end of the paddock very close to Rally HQ. On Sunday the cold summer buffet and awards will be laid on across the road towards Sledmere House approx. 5 mins walk from Rally HQ. The route will be arrowed.

Camping Plots

Sledmere Estate have very kindly allowed us to use their paddock at Rally HQ to allow you to camp over on Saturday night. There are no facilities as it's just a field except for a few Portaloos. You can use it free of charge all part of your entry fee. Please take all of your litter home with you.

Trailer Parking

There will be ample room for you to park your tow vehicle and trailer (see map). Upon arrival park as directed and then drop your rally car off the trailer and park it at your number in the competitor parking area which is straight opposite the trailer parking (see map). Those that are camping may want to go and get a plot. It is our intention to close the gates and park vehicles over the gates in and out on Saturday night to make the site as secure as possible just in case anyone has any ideas at night. Gates will need to be open again from 7am Sunday morning.